

# Global barriers in gynaecologic oncology impacting treatment experience and outcomes

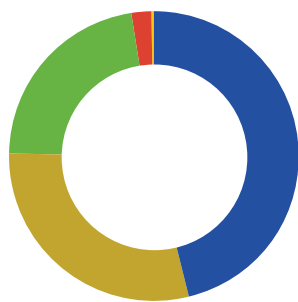
Findings from the Your Cancer Is Our Challenge multinational survey



## Understanding the burden of gynaecologic cancers

>1.4 million

people were diagnosed with a gynaecologic cancer in 2022 and many more currently live with one of these conditions.<sup>i</sup>



Cervical cancer	662,301	Endometrial cancer	420,368
Ovarian cancer	324,603	Vulvar cancer	47,336
		Vaginal cancer	18,819

“I was blindsided with a stage 3 ovarian cancer diagnosis. At first, I vacillated between shock and denial, and fearing the worst-case scenario.”

Jennifer Garam, ovarian cancer survivor

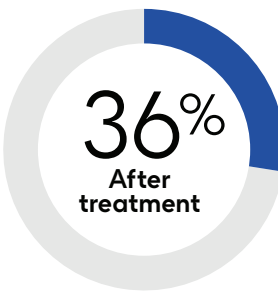
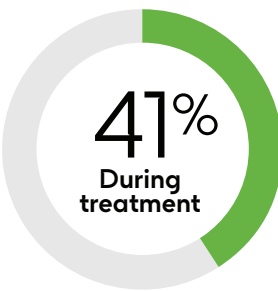
## Survey findings

### Gaps in knowledge related to treatment

Though 83% of patients felt their healthcare provider explained treatment options well...

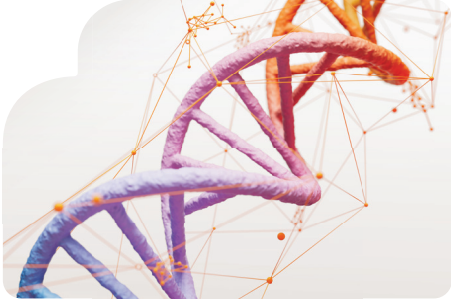


many patients reported feeling **uncertain** about what to expect during or after treatment.



Across the regions surveyed, **34% of patients have never had any genetic testing done.** Among those who had received genetic testing, the majority **wished their healthcare provider gave clearer explanations of genetic test results (74%).**

Genetic tests are being **increasingly used in gynaecologic oncology to optimise treatment,** helping healthcare providers identify treatment options that are most likely to work for individual patients.

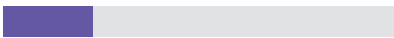


### Emotional burden of treatment and care

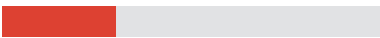
Despite 91% of treated patients feeling they received the best treatment possible for their gynaecologic cancer...



**73%** of patients **did not feel empowered** to overcome their gynaecologic cancer diagnosis.



**~20%** of patients noted that they felt **no one understood** their personal experience.

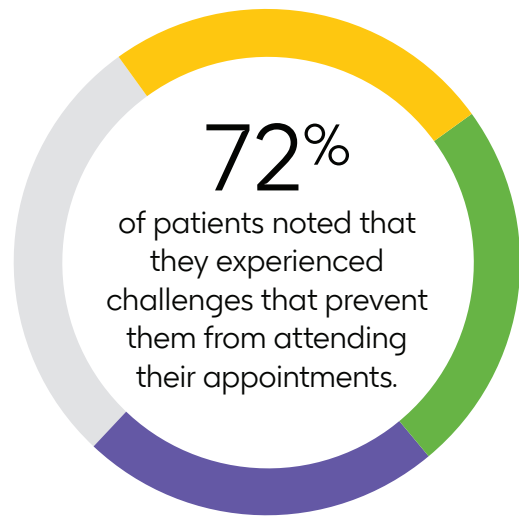


**~30%** of patients felt **they were 'to blame'** for their diagnosis for one or more reasons.

### Barriers to care



Treatment accessibility was a hurdle in itself - with almost **8 in 10 patients (78%) having experienced challenges in accessing the treatment** they need, with **appointment availability (36%) being a top challenge** across most countries.



#### Most common barriers to attending appointments:



**25%** Day-to-day responsibilities



**24%** Difficulty managing required paperwork



**23%** Not feeling well enough to leave the house

### Low utilisation of patient support



**Only 1 in 4 patients (25%) have participated in a cancer support group,** while even fewer patients (14%) stated that they had found a gynaecologic cancer support group that had been **“really helpful in navigating their experience with a gynaecologic cancer.”**



**Not wanting to trouble their loved ones/caregivers** with their needs is a feeling expressed by some patients surveyed (30%).

**71%** of patients are most likely to have received a lot or a great deal of **emotional support from family/friends during their treatment.**

Nearly three-fifths also received a lot or a great deal of **assistance getting to appointments.**

**57%**

Similarly, a majority of patients also received a lot or a great deal of help with **day-to-day responsibilities.**

**56%**

## Your Cancer Is Our Challenge

Your Cancer Is Our Challenge is GSK’s multi-year, integrated initiative that aims to uncover and address gaps and barriers associated with gynaecologic cancers and create solutions to drive progress – beyond treatment. GSK commissioned The Harris Poll to conduct a quantitative online survey among more than 800 gynaecologic cancer patients and survivors across 10 countries. The survey identified the following most frequently cited challenges: gaps in knowledge related to treatment, emotional burden of treatment and care, barriers to care, low utilisation of patient support.

<sup>i</sup> Worldwide Cancer Data. World Cancer Research Fund. <https://www.wcrf.org/dietandcancer/cancer-trends/worldwide-cancer-data>. Updated January 10, 2022. Accessed September 2024.

The research was conducted online by The Harris Poll on behalf of GSK among 818 adult women 18+ who have been diagnosed with ovarian, uterine/endometrial/womb, cervical, vulvar, and/or vaginal cancer, residing in Brasil (n=51), France (n=100), Germany (n=105), Greece (n=50), Italy (n=105), Poland (n=50), Spain (n=100), Türkiye (n=50), the United Kingdom (n=105), and the United States (n=102). The survey was conducted 13 March 2024 – 12 May 2024. Individual country results are not weighted and therefore only representative of the individuals surveyed. Total global data are weighted across countries equally. For this study, the total sample data are accurate to within + 3.6 percentage points using a 95% confidence level. This credible interval will be wider among subsets of the surveyed population of interest.

Patients surveyed represent individuals with cervical (39.4%), uterine/endometrial/womb (35.2%), ovarian (18.9%), vaginal (5.0%) and/or vulvar (1.5%) cancers.



A GSK survey conducted by The Harris Poll. Trademarks are property of their respective owners.